



日本語センター

住所: 6011 152nd Ave. SE, Bellevue, WA 98006
電話: 425-891-2129 ファックス: 425-644-7728
ウェブサイト <http://www.japanese-language.net>
メール: info@japanese-language.net

JLC通信

(つうしん)

Newsletter June 2004

*文化 (ぶんか) * Culture Corner

てるてる坊主 Teruteru-bozu



Teruteru-bozu is a very simple doll made of white paper or cloth, which is popularly believed to have a magic power to bring nice weather. People hang it from the eaves or on the outside of a window on the evening before their special event. In Japan, from June until the middle of July, it is the rainy season, which is called *Tsuyu*. Consequently, Teruteru-bozu is a familiar sight during *Tsuyu*. The custom of praying to it for good weather has long been practiced. Although it is a superstition, many people invariably associate it with their happy and innocent childhood days.

There are no holidays or events in June, just the Rainy Season! Because of this, many Japanese do NOT like June. The Seattle area has many rainy days and outside activities are limited. If you are bored on such a day, why don't you try making a Teruteru-bozu? It may bring a sunny day to you.

*食べ物 (たべもの) * Food Corner

ビール (Beer)

I would like to talk about Beer, even though it is not food. Have you ever tasted Japanese beer? "Sapporo," "Asahi," and "Kirin" are popular beer brands in Japan. I am very picky about beer, however they are all good. Kirin has bitter taste and I like it (People also say that Japanese beer is higher % of alcohol than American beer). Do you know the original meaning of these brand names?



アサヒ ASAHI

"ASAHI" means morning sun 「朝日」.

サッポロ SAPPORO

SAPPORO is the name of a city 「札幌」 located in the northern island, in Hokkaido, Japan. The population is about 1.4 million. Sapporo is the center of politics, economy and culture in Hokkaido. The Winter Olympics were held there in 1972.



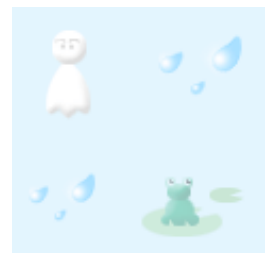
キリン KIRIN

"KIRIN" is a kind of animal. A giraffe in Japanese is Kirin also but beer "KIRIN" is not giraffe. This is an imaginary animal 「麒麟」 which is a mythical horned Chinese deer-like creature that is said to appear only when a sage has appeared. It can run very fast (4,000km /day). It is often depicted with what looks like fire all over its body. In most drawings, its head looks like that of a Chinese dragon. The Kirin is sometimes translated as unicorn, because it is superficially similar to the unicorn as the unicorn itself is an imaginary beast with a single horn on its head. Although it looks fearsome, the Kirin only punishes the sinners; when it walked on grass, it could not trample it. Being a peaceful creature, its diet did not include flesh.

✉ おたより ✉ From Guest book



I have a daughter who is 3-years old. She is very smart and disciplined very well. Do you have a Japanese class that would be appropriate for 3-year old? Do you have Group Lessons for young children with their parents together? What age is reasonable to start Japanese lessons?



Our response: You can learn at any age, however the younger you are when you start, the better. There are many people who began learning Japanese for the first time at college and became fluent in Japanese later; Actually some of my students have more knowledge, and better language skills than average native Japanese. The only problem they have is pronunciation. They speak, write and read fluently but can't pronounce certain words correctly like a native Japanese. I can't fix their problem because it's too late. Young people will not have this kind of problem. However, if it's necessary for the instructor to spend more time for discipline than teaching, it's too early. Unfortunately we don't have group classes for very young children with their parents at this point. If you have three more friends, we will create a Group Course for you. We recommend private lessons for the children younger than 10 years old. Our private lesson is normally 2 hours per lesson, however we recommend one or one and half hour lesson for the very young children. Parents are welcome also.



✿ レストラン ✿ Restaurant

益子 (ましこ) Mashiko (Sushi bar)

It's not a traditional Japanese Sushi bar but a modern/contemporary restaurant. You will never hear traditional Japanese music there, however you can enjoy live jazz instead. I like the food of course. But guess what? I really like the chef. He is Ni-sei (maybe) and his Japanese is much better than mine. You had better check out this place and this guy. (K)

4725 California SW, Seattle, WA 98116 Tel: 206.935.4339 www.sushiwhore.com

Our comment: We are planning a special class focus on Sushi and looking for a sushi chef as a guest speaker. We should contact him.

✿ ことわざ ✿ Proverb Corner

「思い立ったが吉日」(おもいたったがきちじつ) Omoi tattara kichijitsu.

Never leave till tomorrow what can be done today. Make hay while the sun shines. No reason to wait if you like to learn Japanese. Improve your language skill while JLC is here.



📎 自己紹介 (じこしょうかい) 📎 Student of JLC

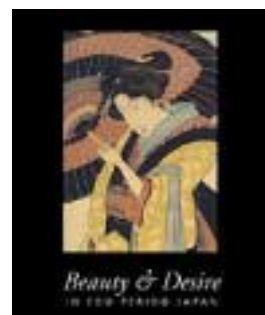
はじめまして (How do you do?). My name is Miako. I am taking private lessons and enjoy learning about Manyo-shu, "ten thousand leaves" (the earliest anthology of Japanese poetry, dated back ca. 759). I attained my MS in Japanese Language and Culture and hope to complete my PhD soon. I have been teaching Japanese for the last 6 years. Yes, I am one of instructors of JLC as you know, and also a student of JLC. My goal as a student is to read all poems in Manyo-shu (thousands of poem in old styled Japanese language) and complete my PhD. どうぞよろしく (Nice to meet you.)

📄 プレスリリース 📄 Press Release

6-day Intensive Japanese Language Courses

Japanese Language Center (JLC) provides 6-day Intensive Japanese courses during the summer months

These courses are designed for business people and college students. High school students are also welcome, however Japanese Language Center also provides Summer Language Camp for teenagers. Two different Intensive Courses are available: "Intensive Japanese 101-104" and "Intensive The Japanese-Language Proficiency Test Courses."



"Intensive Japanese 101-104 Courses" These courses are for beginners and focus on conversation. If you have plans to go to Japan on business or vacation, these courses are perfect. If you finish a 6-day Intensive course, your trip would be more comfortable and fun.

"Intensive Japanese-Language Proficiency Test Courses" These courses are relatively high levels. They cover read, write, listen, and speak. Japanese Language Center has excellent instructors for these intensive courses. All of them are Master's Degree/MBA/PhD holders with several years experience as University faculty, or the equivalent. Their teaching method is unique and you will learn Japanese quickly.

***** 6-day Intensive Japanese Course *****

6-day: Mon/Wed/Fri (2 weeks) Morning Course: 9:30-12:30PM
 Afternoon Course: 1:00- 4:00PM
 Course level: Beginners (Japanese 101-104)
 Advanced (Proficiency Level 2-3) Lesson Fees: \$200

The registration has already begun. Sign up early. The new intensive courses start every two weeks during the summer months. Please visit the JLC website at <http://www.japanese-language.net> for detail schedules and more information.

Summer Japanese Language Camp for Young People

Japanese Language Center (JLC) provides 6-day Japanese Language Summer Camp. This Camp is designed for teens.

Japanese Language Center provides a great language camp. This is a 6-day session during the Summer Break. Students will learn writing, reading, and conversation. The lessons focus on the realistic topics and vocabulary of the average teenagers' life.

The curriculum is very organized and the instructors are enthusiastic about teaching Japanese. They have been teaching Japanese at college level for several years. This is fun, and interesting camp that stresses academically high quality. The registration has already started. Sign up early.



| | | |
|-----------------------|-------------------|--------------------|
| <u>Class Schedule</u> | 6-day Mon/Wed/Fri | |
| Morning course: | 9:30 -12:30PM | |
| Afternoon course: | 1:00 - 4:00PM | |
| Summer Camp #1: | 28 June - 9 July | |
| Summer Camp #2: | 12 July - 23 July | |
| Summer Camp #3: | 26 July - 6 Aug | |
| Summer Camp #4: | 9 Aug. - 20 Aug | |
| Summer Camp #5: | 23 Aug. - 3 Sept | Lesson Fees: \$200 |

Japanese Language Center provides the regular Business Japanese Courses, Intensive courses, and the regular Children Classes also. Please visit the JLC website at <http://www.japanese-language.net> for detail schedules and more information.

*新しい言葉 (あたらしいことば) * New word

「ケチ若」 Kechiwaka?

4月から始まった日経新聞の新しい月曜版、「スイッチオン・マンデー」。4月26日付には『ケチ若世代』が登場」という記事が15面に載りました。「20歳代、つまり今の若者はおカネを使わない」という内容です。

彼らが「ケチ」なのは、10歳代にバブル経済の崩壊を体験し、将来にも明るい展望を持てないからです。確かに、いまの20歳代は子どものころに親の失業などを体験した人が多いわけで、おカネを稼ぐようになって、一昔前の若者のように気前よくはなれないのでしょう。この記事では、海外旅行に行かなくなるなど若者の財布のひもが固くなった例を紹介しています。

企業は新たに登場した消費者層である「ケチ若」への対応が必要です。記事でも、携帯会社が携帯電話端末を販売するにあたって若者だけを対象に割引制度を始めたケースなどを紹介しています。ただ、「ケチ若」も、自分の能力を高めるためにはおカネを使うようです。資格取得学校などに若者が詰め掛けるのはその好例です。「父親のようにリストラにあっても大丈夫なようにしておこう」というわけです。

いま、日本経済は少し明るさを増し、消費も盛り上がり始めました。ただ、この「ケチ若世代」はまだ本格的な消費には動いていないようです。景気が本格的に回復するかは、企業がこの世代の財布のひもをゆるめさせるようなマーケティングを展開させるなり、政府が「日本」への信頼を高めるようにするなり、努力が要るのでしょう。(From NIKKEI USA 4946)



